



Corteva brand soybeans treated with ILEVO® fungicide treatment

Outperforms Saltro® Seed Treatment in Head-to-Head Trial Comparisons



Corteva conducted on-farm research to evaluate the benefits of soybean seed treatments at 76 locations across 8 key soybean growing states. Research sites were selected based on the possibility of soybean cyst nematode (SCN) pressure in the field.

Head-to-head comparisons were made utilizing LumiGEN® seed treatments with Corteva brand soybeans treated with ILEVO® fungicide treatment versus CruiserMaxx® Vibrance® plus Saltro® seed treatment. The on-farm trials were evaluated for several factors including SCN population levels, sudden death syndrome (SDS) severity, halo effect on cotyledons, influence of PPO herbicides, and stand count.

Key Findings:

Corteva® brand soybeans treated with ILEVO® fungicide treatment outperformed Saltro® seed treatment by:

1.1 bu/acre under SCN pressure*

0.7 bu/acre under SDS pressure*

Results:

Locations with SCN Pressure

- SCN pressure varied by site, with 61% having at least medium pressure.
- Corteva brand soybeans with ILEVO® fungicide treatment yielded an average of 1.1 bu/acre more than soybeans treated with CruiserMaxx® Vibrance® plus Saltro® seed treatment and 1.8 bu/acre more than the base seed treatment.*



Locations with SDS Pressure

- Moderate to high SDS pressure was found at 16% of sites.
- Corteva brand soybeans with ILEVO® fungicide treatment yielded an averaged of 0.7 bu/acre more than soybeans treated with CruiserMaxx® Vibrance® plus Saltro® seed treatment and 3.8 bu/acre more than the base treatment under moderate to high SDS pressure.*

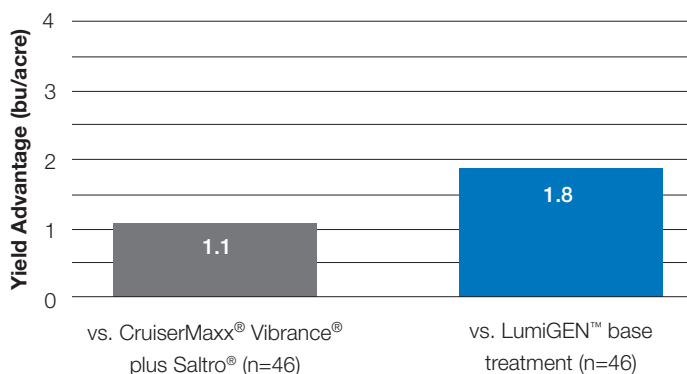
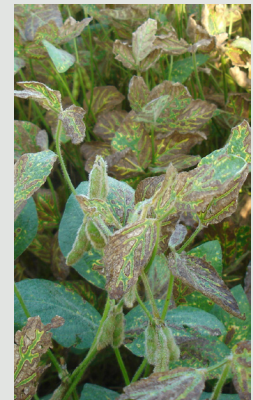


Figure 1. Average yield advantage of LumiGEN™ seed treatment with ILEVO® fungicide treatment compared to CruiserMaxx® Vibrance® plus Saltro® and the LumiGEN™ base treatment at sites with medium or higher high SCN population levels

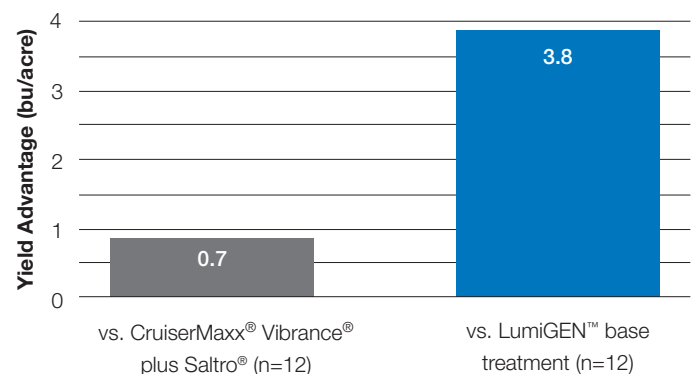
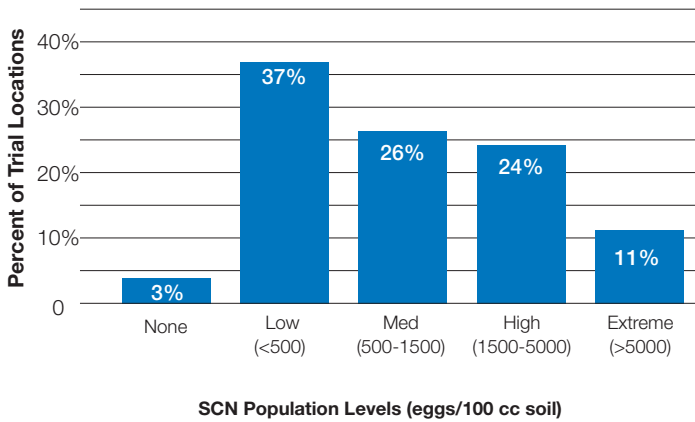


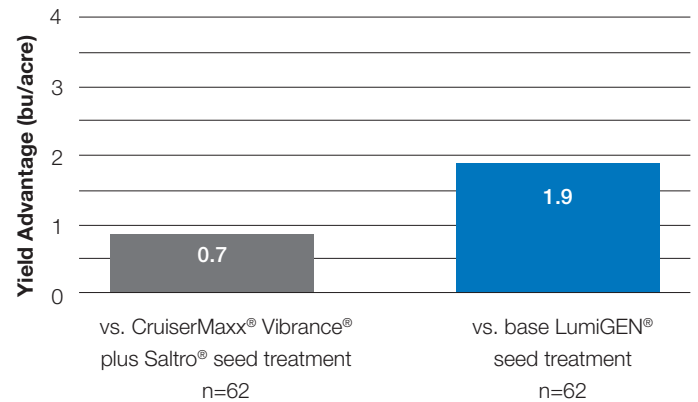
Figure 2. Average yield advantage of LumiGEN™ seed treatment with ILEVO® fungicide treatment compared to CruiserMaxx® Vibrance® plus Saltro® and the LumiGEN™ base treatment at sites with moderate to high SDS pressure.

Other Key Findings:

- Soybean cyst nematodes (SCN) were found in nearly all 76 sites evaluated
- Halo effect did not reduce the yield benefits of ILEVO® seed treatment nor did use of PPO herbicides.



Soybean cyst nematode population levels in fields where on-farm research trials were conducted.



Average yield advantage of LumiGEN seed treatment with ILEVO® fungicide compared to CruiserMaxx® Vibrance® plus Salstro® and the base LumiGEN seed treatment at sites where the halo effect was observed with the ILEVO® seed treatment.



ILEVO® seed treatment delivers exceptional protection in acres at risk for sudden death syndrome (SDS) or soybean cyst nematode (SCN) injury. Corteva brand soybean performance with ILEVO® seed treatment is proven through 9 years of trials and 6 years of grower success in SCN and SDS environments.

Our multi-year research evaluating ILEVO® fungicide/nematicide demonstrated an average of:

+1.5 bu/acre with the SCN rate**

+6.4 bu/acre with the higher SCN/SDS rate**

Contact your local Corteva sale representative to treat your soybeans strong from the start.

Visit us at corteva.us

The foregoing is provided for informational use only. Please contact your Corteva sales professional for information and suggestions specific to your operation. *2020 data are based on average of all comparisons made in 76 locations across MN, ND, SD, IA, MO, IL, IN and OH through Dec 1, 2020. Multi-year and multi-location is a better predictor of future performance.

** 2012-2015 data are based on average of all comparisons made in 165 locations. Yield benefit of 1.5 bu/a under moderate SCN pressure using the lower SCN rate, 40 locs. Yield benefit of 6.4 bu/a under moderate SCN plus SDS pressure using the higher SDS rate, 46 locs. Do not use these or any other data from a limited number of trials as a significant factor in product selection. Product responses are variable and subject to a variety of environmental, disease, and pest pressures. Individual results may vary. Components of LumiGEN® seed treatments are applied at a Corteva Agriscience production facility, or by an independent sales representative of Corteva Agriscience or its affiliates. Not all sales representatives offer treatment services, and costs and other charges may vary. See your sales representative for details. Seed applied technologies exclusive to Corteva Agriscience and its affiliates.

ILEVO® is a registered trademark of BASF.

Salstro®, and CruiserMaxx® Vibrance® are a registered trademarks of a Syngenta Group Company.

