

# ENLIST E3™ SOYBEANS



**HOEGEMEYER**  
THE RIGHT SEED.



## Exceptional weed control. Ease of use. Excellent yield.

Enlist E3™ soybeans offer the most advanced trait technology available in soybeans, providing a new standard for weed control and yield performance. Tolerance to new 2,4-D choline, glyphosate and glufosinate allow you to use Enlist Duo® or Enlist One™ herbicides to get tough weeds out of the way, so each Enlist E3 soybean can achieve full genetic potential.

### TOLERANCES

#### Enlist E3™ soybeans

- New 2,4-D choline
- Glyphosate
- Glufosinate

### WIDE APPLICATION WINDOW

#### Enlist E3™ soybeans

No later than R2 (full flower)

Enlist E3™ soybeans have no plant-back restrictions after using an Enlist™ herbicide for burndown.

Even the toughest weeds don't stand a chance, including:



Common ragweed



Giant ragweed



Morningglory



Palmer amaranth<sup>1</sup>



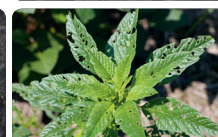
Marestail<sup>1</sup>



Velvetleaf



Lambsquarters



Waterhemp

## The Enlist™ weed control system: an easy fit for your operation.

- Enlist E3 soybeans are compatible with nearby nonsusceptible crops such as **soybeans without the Enlist trait, corn, peanuts, alfalfa and wheat**. You can apply Enlist herbicides on Enlist E3 soybeans planted right next to these nonsusceptible crops without a buffer.
- A wide application window and the versatility of Enlist herbicides make them easy to incorporate into your weed management plan.

"The genetics were top-notch. The Enlist beans yielded really good and met my expectations."

– Kevin Miller,  
Ohio soybean farmer

"After application, I could see no evidence at all on the beans. There was no burn or wrinkling of leaves at all. The crop tolerance is a big value."

– Josh Turner,  
Missouri soybean farmer



## Complete convenience.

Only Enlist Duo® herbicide combines the proven performance of 2,4-D choline and glyphosate. The two modes of action work together to deliver control of yield-robbing weeds and help prevent resistance.

APPLICATION RATE	
Weeds 3" to 6" tall	Glyphosate-resistant or hard-to-control weeds
3.5 pt./A	4.75 pt./A



## Additional tank-mix flexibility.

Enlist One™ herbicide provides additional tank-mix flexibility with glufosinate and other qualified tank-mix products, allowing for a customized weed control program to fit each farm. Farmers gain superior control of resistant and hard-to-control broadleaf weeds.

APPLICATION RATE	
Weeds 3" to 6" tall	Glyphosate-resistant or hard-to-control weeds
1.5 pt./A	2 pt./A

## On-target application.

### 90% less drift than traditional 2,4-D

The drift reduction from Colex-D® technology combines with low-drift nozzles to cut drift by as much as 90% compared with traditional 2,4-D.

### 96% less volatile than 2,4-D ester

Near-zero volatility – up to 96% less than 2,4-D ester – helps keep Enlist™ herbicides in place and improve control.



VISIT [ENLIST.COM](http://ENLIST.COM) TO LEARN MORE ABOUT HOW THE ENLIST™ WEED CONTROL SYSTEM CAN HELP YOU TAKE CONTROL OF WEEDS LIKE NEVER BEFORE. FIND THE MOST CURRENT LIST OF QUALIFIED TANK-MIX PRODUCTS FOR ENLIST DUO® AND ENLIST ONE™ HERBICIDES AT [ENLISTTANKMIX.COM](http://ENLISTTANKMIX.COM).



<sup>1</sup>May require a broader management plan including timely application and use of a soil residual herbicide.

®Trademark of The Dow Chemical Company ("Dow") or an affiliated company of Dow. Enlist E3 soybeans were jointly developed by Dow AgroSciences and MS Technologies. Enlist Duo and Enlist One herbicides are not registered for sale or use in all states or counties. Contact your state pesticide regulatory agency to determine if a product is registered for sale or use in your area. Enlist Duo and Enlist One herbicides are the only 2,4-D products authorized for use in Enlist crops. Always read and follow label directions.  
©2017 Dow AgroSciences LLC E01-401-070 (11/17) BR 010-91322 DAAGNLST7108